



WHAT'S IN A CARE PACKAGE?

- Up to THREE (3) medical shirts
- Pair of gripper socks
- Be Strong fleece blanket
- Wristbands
- Chapstick
- Hand-made encouragement card



If you need help ordering, please contact us:
EMAIL: request@lukesfastbreaks.org
PHONE: 802-585-3732

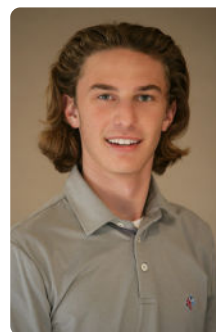
*shipping and handling fee may be required

OUR MISSION

Luke's FastBreaks supports children, adolescents, and young adults diagnosed with cancer. We strive to promote normalcy and restore dignity during treatment by replacing the hospital gown with our unique Medical Shirts.

LUKE'S STORY

When I was nine years old, I got diagnosed with Hodgkin's Lymphoma. I spent the next year in and out of hospitals, doctors' offices, and clinics receiving treatment. Today, I am a cancer survivor! My dream is to help other kids feel normal and Be Strong while fighting for their life. Please read about my journey and see how Luke's FastBreaks started!



Luke
 Founder of Luke's FastBreaks
 and Cancer Survivor



FOLLOW US
 @LukesFastBreaks



Unique & Colorful
MEDICAL SHIRTS
 that replace the hospital gown!



➔ **#BeStrong** ◀

"Be Strong and Courageous. Do not be afraid; do not be discouraged, for the LORD your God will be with you wherever you go." Joshua 1:9

www.lukesfastbreaks.org

LFB Medical Shirts make a difference!

- Snaps up and down each side
- Comes apart into two pieces
- Allows easy access to IVs, port, and lines
- Comes in an infection control sealed bag
- Meets quality control standards
- Enables privacy and restores dignity
- Longer than a normal t-shirt
- Promotes normalcy
- Meets hospital requirements
- MRI and X-ray safe
- Fun and inspiring to wear

SNAPS UP AND DOWN EACH SIDE



STYLES & COLORS



How to Order



www.lukesfastbreaks.org

We ship orders within 24-48 hrs.
You will receive an email with a tracking number when your package is shipped!

SIZE CHART

Size	Front Length	Chest/Opening
2T-3T	17"	12"
4T-5T	18.5"	14"
YS (6-8)	20.5"	16"
YM (10-12)	22.5"	17.5"
YL (14-16)	24"	19"
AS	26"	21"
AM	26.5"	23"
AL	27"	24"
AXL	28"	26"
AXXL	28"	28"

MIX & MATCH FRONT & BACK HOW COOL IS THAT?

You can MIX & MATCH colors FRONT & BACK!
Wear a BLUE FRONT with a YELLOW BACK.

Get creative & show us your favorite colors!
Tag us wearing YOUR SHIRT on SOCIAL MEDIA!

FOLLOW US



@LukesFastBreaks

www.lukesfastbreaks.org

If you need help ordering, please contact us:

EMAIL: request@lukefastbreaks.org

PHONE: 802-585-3732

*shipping and handling fee may be required